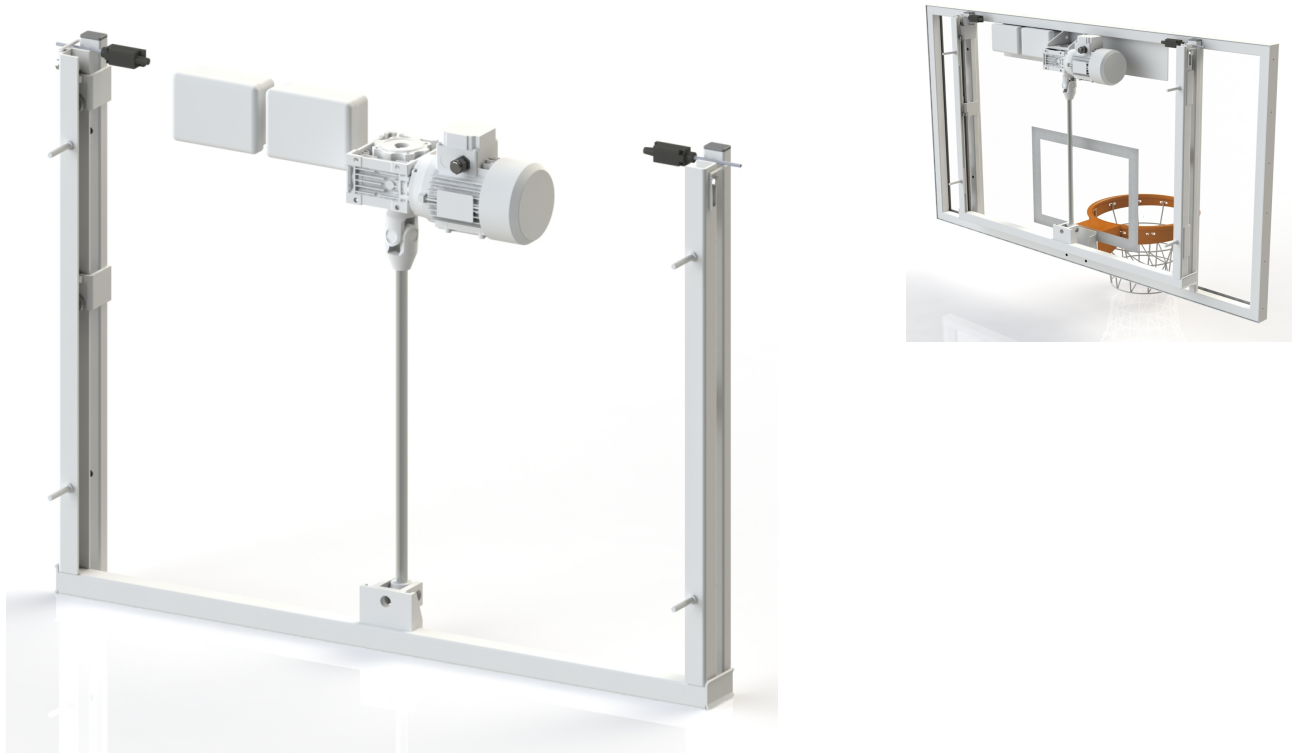


ELECTRIC HEIGHT ADJUSTMENT MECHANISM



■ Product description

The height adjustment mechanism with an electric drive for the 90x120 cm backboard . It is a special construction that enables smooth adjusting of the basketball ring between 260-305 cm by using a system of bearing rolls that move in a special rail. Applying this mechanism gives an easy and smooth adjusting through long time with no need for smearing. Trapezoidal screw TR20 and trapezoidal thread nut have been used in this mechanism.

■ Additional information

Electric mechanism consists of double security system for switching of the engine in the extreme positions of the backboard:

- mechanical, by reaction of the limit switches that cut off engine's power supply with mechanical durability min. 1 mln connections.

- timing, by engine's controller. Control of the electric mechanism is possible by the manual switch (for example key wall switch), wireless remote, tablet application. Mechanism is being supplied with a power from electrical network 230V/50Hz.